



Regency Park #429

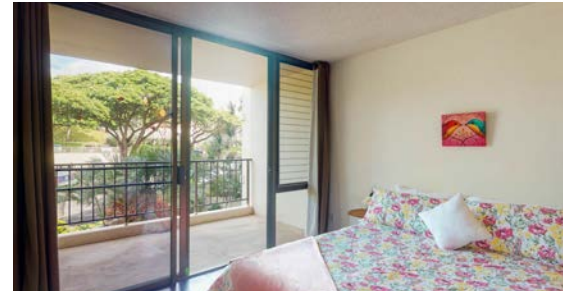
St. Louis Neighborhood, Honolulu, 96816

2BR/ 2BA \$573,000 (FS)

Enjoy both condo life and a large outdoor space at Regency Park! This two-bedroom, two-bath condo is tastefully remodeled and features granite counters, two wine fridges, large island, tankless water heater, A/C, in-unit washer/dryer, and two parking spaces! The Regency Park condo features a huge 2+ acre private park with BBQ, pool, tennis courts, and gym, while also being pet-friendly! Everything you would need to live, WFH, and play is all right here at Regency Park! Visit the virtual tour link for lots more information, including a 360° virtual tour and virtual open house video on demand.

QUICK STATS (MORE STATS ON THE BACK):

- TMK: 1-3-3-001-007-0219
- Living Area: 802 Square Feet
- Maintenance Fee: 705.16 per Month



VISIT THE PROPERTY ONLINE:
<http://www.regencypark429.com>



Nick Kawakami, RS-76713
(808) 282-8146
nickk@marcusrealty.com

Seller & Seller's brokerage make no guarantees on any information contained herein.

...MORE DETAILS ABOUT YOUR NEW HOME:

Statistics:

Garage/Carport:

Living Area:

Lanai:

Other:

Stories:

Parking:

Parking Style:

Stall #:

Year Built:

Year Remodeled:

Land Information:

Building Name:

Land Tenure:

Land Recorded:

Fee Options:

Land Use Zoning:

Flood Zone:

Location:

Lot Description:

Set Backs:

Easements:

Frontage:

Topography:

Property Information:

TMK:

Property Type:

Style:

Property Condition:

Furnished:

Fractional Ownership?

Roofing:

Flooring:

Construction:

Pool Features:

View:

Utilities Available:

Inclusions:

Exclusions:

Disclosures:

Fees & Taxes:

Monthly Maintenance Fee:

Other Association Fee:

Other Includes:

Total Monthly Association Fees:

Includes:

Community Association:

Management Company:

Monthly Taxes:

Tax Year:

Home Exemption:

Tax Assessed Improvements:

Tax Assessed Land:

Tax Assessed Total:

Special Sales Condition:

Neighborhood:

Region:

Neighborhood:

Elementary School:

Middle School:

High School: